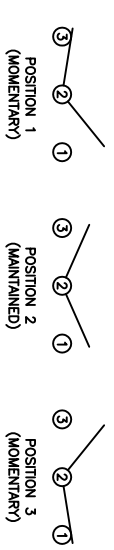
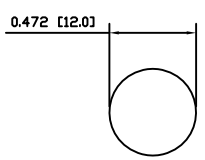
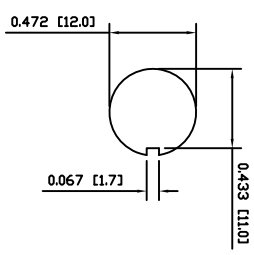
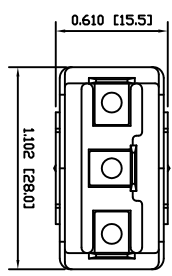


- MATERIALS**
- BODY: Phenolic, UL94 V-0
  - ACTUATOR: Nickel Plated Brass
  - BUSHING: Nickel Plated Brass
  - HOUSING: Nickel Plated Steel
  - HARDWARE: Nickel Plated Brass
  - SPACER PLATE: Epoxy Board
  - SPRING: Steel
  - ACTUATOR PLUNGER: Phenolic, UL94 V-0
  - MOBILE CONTACT BAR: Silver Plated Copper
  - CENTER PIVOT: Silver Plated Copper
  - CONTACTS: Silver Alloy Clad Copper
  - TERMINALS: Brass

- SPECIFICATIONS**
- FUNCTION: 1P2T (ON)-OFF-(ON)
  - RATINGS:
    - ANSI/UL1054 and CAN/CSA C22.2 No.55 (E194579): 20A 125VAC [cURus]
    - 15A 277VAC [cURus]
    - 1.5HP 125/277VAC [cURus]
  - CONTACT RESISTANCE: Initial: 10mΩ Max.
  - INSULATION RESISTANCE: 10MΩ Min.
  - DIELECTRIC STRENGTH: 1,500VAC for 1 Minute
  - OPERATING LIFE: 6,000 Cycles [cURus]
  - TEMPERATURE: Operating: 0°C to 85°C [cURus]
- APPROVALS: **ROHS COMPLIANT**



SCHEMATIC

SUGGESTED PANEL CUTOUT

ALTERNATE PANEL CUTOUT

ACTUATOR BODY	REV.	DATE	BY
B	10/06/10	CAB	
B	10/06/10	CAB	
B	10/06/09	CAB	
B	10/06/09	CAB	

THE INFORMATION CONTAINED IN THIS DOCUMENT IS PROPRIETARY TO E-SWITCH AND IS NOT TO BE COPIED OR TRANSMITTED

CONNECTED PANEL CUTOUT, SPECIFICATIONS, AND MATERIALS	REV.	DATE	BY
A	19133	10/06/10	CAB
A	19133	09/08/09	CAB
A	19133	09/08/09	CAB

INCHES [MILLIMETERS]	SCALE	PROJECTION
±0.008 [±0.2] / ±1'	1:1	DRIVING NOT TO SCALE

**E-SWITCH** | **LAMB INDUSTRIES**

ST14DD00

DATE	REVISION
JUNE 10, 2010	B