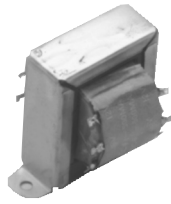


POWER TRANSFORMERS

Dual Secondaries

Style S



Style NV



Style C



Single Primary, Multiple Secondaries

All Primaries 50/60 Hz.

Sec.	STANCOR PART NUMBER	Style	Secondary		Primary Volts	Insulation Test RMS Volts	Termination		DIMENSIONS-INCHES					Agency Certif.	
			Volts	Amps			Primary	Secondary	H	Case W	D	Mounting MW	MD		Weight (lbs.)
A	P-6429†	C	6.3	3.50	117	2500	Leads	Leads	3.88	3.13	3.63	2.50	2.22	4.80	-
			6.3	3.50											
			6.3	3.50											
			6.3 C.T.	3.50											
	P-8361	S	12.0	0.10	117	1500	Leads	Leads	1.75	2.00	1.50	1.72	-	0.36	-
			12.0	0.10											
			12.0 C.T.	0.10											
B	P-8362	S	12.0	0.15	117	1500	Leads	Leads	2.00	2.38	1.75	2.00	-	0.60	-
			12.0	0.15											
			12.0 C.T.	0.15											
	P-8364	S	12.0	0.50	117	1500	Leads	Leads	2.38	2.88	2.13	2.38	-	1.25	-
			12.0	0.50											
			12.0 C.T.	0.50											

† Has Electrostatic Shield

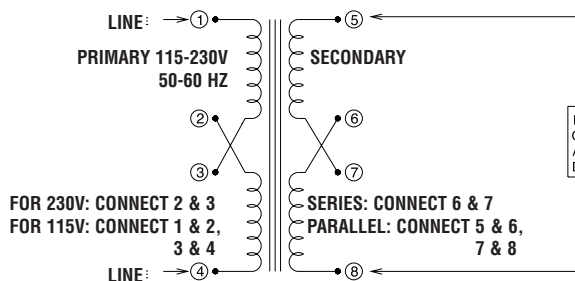
Dual Primary, Dual Secondary

(Primaries 115/230 Volts 50/60 Hz.—Solder Lug Termination)

SEC.	STANCOR PART NUMBER	Style	Schem.	VA Cap.	Output from Two Secondary Windings			DIMENSIONS-INCHES					Weight (lbs.)	Agency-Certification
					Volts	Amp	Series	H	Case W	D	Mounting MW	MD		
C	P-6375	S	2	12	6 @ 1.00	6 @ 2.0	12 @ 1.00	2.38	2.88	1.75	2.38	-	1.0	UL
	P-6376	S	2	24	6 @ 2.00	6 @ 4.0	12 @ 2.00	2.75	3.13	2.00	2.81	-	1.5	UL
	P-6377	S	1	48	12 @ 2.00	12 @ 4.0	24 @ 2.00	3.13	3.63	2.25	3.13	-	2.5	UL
	P-6378	NV	1	96	12 @ 4.00	12 @ 8.0	24 @ 4.00	3.50	2.81	3.25	2.25	2.31	4.2	UL
	P-6379	NV	1	192	12 @ 8.00	12 @ 16.0	24 @ 8.00	4.25	3.44	3.62	2.75	3.13	8.0	UL
D	P-8615	S	2	12	24 @ 0.25	24 @ 0.5	48 @ 0.25	2.38	2.88	1.75	2.38	-	1.0	UL
	P-8616	S	2	24	24 @ 0.50	24 @ 1.0	48 @ 0.50	2.75	3.13	2.00	2.81	-	1.5	UL
	P-8617	S	1	48	24 @ 1.00	24 @ 2.0	48 @ 1.00	3.13	3.63	2.25	3.13	-	2.5	UL
	P-8618	NV	1	96	24 @ 2.00	24 @ 4.0	48 @ 2.00	3.50	2.81	3.25	2.25	2.31	4.2	UL
	P-8619	NV	1	192	24 @ 4.00	24 @ 8.0	48 @ 4.00	4.25	3.44	3.62	2.75	3.13	8.0	UL

* Agency Certification Note: UL Recognized (File E68100, Guide #XPTQ2)

Schematic 1



Schematic 2

