

PLEASE CHECK WWW.MOLEX.COM FOR LATEST PART INFORMATION

Part Number: [98817-1030](#)
Status: **Active**
Overview: NSCC - New Standard Casing Contact
Description: NSCC single part, Unsealed, 1.50mm, Female Housing, 3.33mm Pitch NSCC, Wire to Wire, 3 Circuits, White

Documents:

[3D Model](#) [Application Specification AS-98821-001 \(PDF\)](#)
[Drawing \(PDF\)](#) [RoHS Certificate of Compliance \(PDF\)](#)
[Product Specification PS-98821-001 \(PDF\)](#)

General

| | |
|-------------------------------|--|
| Product Family | Crimp Housings |
| Series | 98817 |
| Application | Power, Wire-to-Wire |
| Application Tooling Part Link | 63813-3800 |
| Overview | NSCC - New Standard Casing Contact |
| Product Name | NSCC |
| UPC | 822348760916 |

Physical

| | |
|-------------------------------|--------------------------|
| Breakaway | No |
| Circuits (maximum) | 3 |
| Circuits Detail | 3x1.5mm female terminals |
| Color - Resin | White |
| Gender | Female |
| Glow-Wire Compliant | No |
| Keying to Mating Part | Yes |
| Lock to Mating Part | Yes |
| Material - Resin | Polyester |
| Net Weight | 2.150/g |
| Number of Rows | 1 |
| Packaging Type | Carton |
| Panel Mount | No |
| Pitch - Mating Interface | 3.33mm |
| Pitch - Termination Interface | 3.33mm |
| Polarized to Mating Part | Yes |
| Ports | 1 |
| Temperature Range - Operating | -40°C to +100°C |

Electrical

| | |
|-------------------------------|-----|
| Current - Maximum per Contact | 10A |
|-------------------------------|-----|

Material Info

| | |
|-----------------|-----------|
| Old Part Number | 010109329 |
|-----------------|-----------|

Reference - Drawing Numbers

| | |
|---------------------------|----------------------------|
| Application Specification | AS-98821-001 |
| Product Specification | PS-98821-001 |
| Sales Drawing | SD-98815-003, SD-98817-002 |

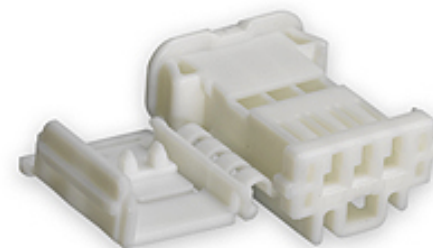


image - Reference only

Series

EU RoHS

ELV and RoHS Compliant

REACH SVHC

Contains SVHC: No Low-Halogen Status Low-Halogen

China RoHS



Need more information on product environmental compliance?

Email productcompliance@molex.com
 For a multiple part number RoHS Certificate of Compliance, [click here](#)

Please visit the [Contact Us](#) section for any non-product compliance questions.

Search Parts in this Series

[98817Series](#)

Mates With

[98822-1030](#) (Male Receptacle Housing)

Use With

Female Terminal NSCC [98897-1109](#) , [98897-1119](#) , [98897-1129](#) or FCI Female Terminal 1.5 Sicma 3

Application Tooling | FAQ

Tooling specifications and manuals are found by selecting the products below. Crimp Height Specifications are then contained in the Application Tooling Specification document.

Global

| Description | Product # |
|---|----------------------------|
| Extractor Tool for Unsealed Receptacle Connectors | 0638133800 |

This document was generated on 10/03/2014

PLEASE CHECK WWW.MOLEX.COM FOR LATEST PART INFORMATION