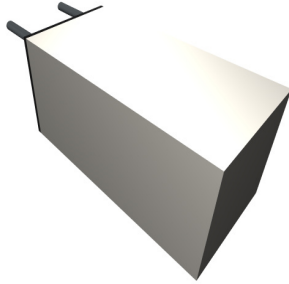


# 6D-1A10N0

# PCB High Density

## PRODUCT DESCRIPTIONS



This is an ultra-compact and lightweight reed relay, which can be easily mounted in narrow spaces, and optimal for compact equipment.

- Smallest mounting space: 4.9mm x 4.9mm
- Electrostatic Shield and Diode options
- Electric Magnetic Shield

## SPECIFICATIONS



6D Series		6D-1A□0□0		6D-1A□1□0		High Density
Parameters	Units	1 Form A		1 Form A		Test Conditions
<b>Coil Specifications</b>						
Nominal Coil Voltage	VDC	5.0	12.0	5.0	12.0	±10% @ 20°C 15°C to 35°C
Coil Resistance	Ω	150	600	150	600	
Operate Voltage	VDC Max	3.2	7.9	3.2	7.9	
Release Voltage	VDC Min	0.7	1.2	0.7	1.2	
<b>Contact Ratings</b>						
Switching Voltage	Volts	50		50		Max DC/Peak AC resistance
Switching Current	Amps	0.2		0.2		Max DC/Peak AC resistance
Carry Current	Amps	0.5		0.5		Max DC/Peak AC resistance
Contact Rating	Watts	5		5		Max DC/Peak AC resistance
Life Expectancy	x10 <sup>6</sup> Cycle	300		300		@ 1V 10mA
Contact Resistance	mΩ	150		150		Max initial @ operate voltage
Contact Resistance Stability	mΩ	5.0		5.0		Max initial @ operate voltage
<b>Relay Specifications</b>						
Insulation Resistance	Ω Min	10 <sup>10</sup>		10 <sup>10</sup>		Between all isolated pins @ 100V 20°C 40%RH
Dielectric Strength	VDC Min	150		150		Between contacts
	VDC Min	No shield		150		Contacts to shield
	VDC Min	150		150		Contacts/Shield to coil
Operate Time (Including Bounce)	msec Max	0.3		0.3		@ nominal coil voltage 100Hz square wave
Release Time	msec Max	0.3		0.3		Diode suppression
<b>Environmental Ratings</b>						
Measurement Reference Conditions		Storage temp: -40°C to +85°C				
Temp: 15°C to 35°C		Operate temp: -20°C to +80°C				
Humidity: 25% to 75%RH		Vibration: 20G's to 2000Hz				
Atmospheric Pressure: 860 to 1060hpa		Shock: 50G's				

### Ordering Code:

6D-1A□<sub>1</sub>□<sub>2</sub>0, 6D-1A□<sub>1</sub>1□<sub>2</sub>0

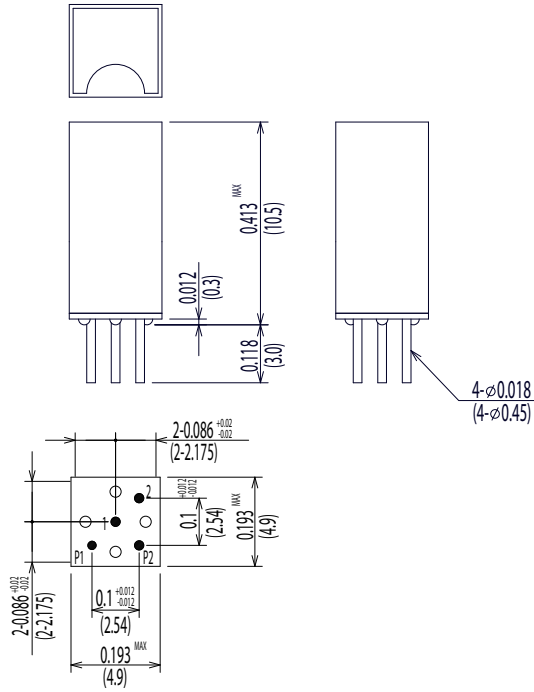
□<sub>1</sub>=1 (5.0VDC), 2 (12.0VDC)

□<sub>2</sub>=D (Diode), N (No diode)

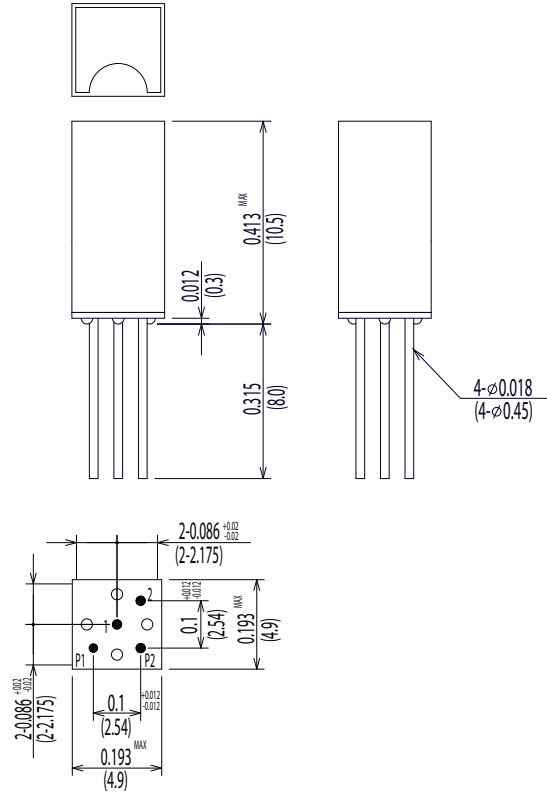
6D-1A□0□0-30 (Long lead version available)

**Dimensions All Dimensions are inches (mm)**

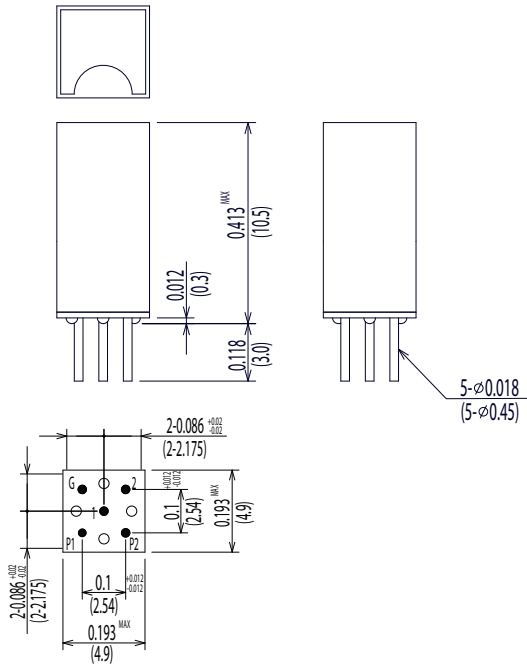
**6D-1A□0□0**



**6D-1A□0□0-30**

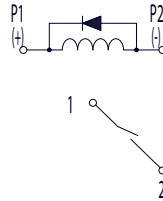


**6D-1A□1□0**

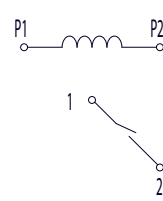


**Schematic <Top View>**

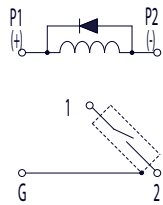
**6D-1A□0D0**



**6D-1A□0N0/6D-1A□0N0-30**



**6D-1A□1D0**



**6D-1A□1N0**

