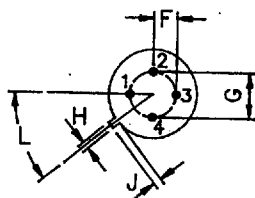


DIM	MIN	MAX
A	5,24	5,84
B	4,52	4,95
C	4,31	5,33
D	0,40	0,53
E	-	0,76
F	1,14	1,39
G	2,28	2,97
H	0,91	1,17
J	0,71	1,22
K	12,7	-
L	12 DEG	48 DEG

ALL DIMENSIONS ARE IN M.M.



Pin Configuration Available in TO-72

Code Style	PIN 1	PIN 2	PIN 3	PIN 4
TO-72	Emitter	Base	Collector	Case
TO-72-1	Base	Emitter	Collector	Case
TO-72-2	Source	Drain	Gate	Case

TO-72 Metal-Can Package Transistors (NPN)

Maximum Ratings							Electrical Characteristics (Ta=25°C, Unless Otherwise Specified)																	
Type No.	V _{CB0} (V) Min	V _{CEO} (V) Min	V _{EBO} (V) Min	P _D (W) @Ta=25°C	I _C (A)	I _{CB0} (μA) Max	V _{CB} (V) @ I _C	I _{CES} Max	V _{CE}	h _{FE} Min	h _{FE} Max	I _C & V _{CE} (mA) (V)	V _{CE(SAT)} (V) & V _{BE(SAT)} (V) @ I _C	I _C (mA)	C _{ob} (pF) Max	f _t (MHz) @ I _C (mA)	NF (dB) @ Freq (MHz)	C _{re} (pF) Max	Case Style					
2N917	30	15	3	0.2	0.05	1	15			20	200	3	1	0.4	1	10	2	6	4		TO-72			
2N918	30	15	3	0.2	0.05	0.01	15			20		3	1	0.4	1	10	1.7	600	4		TO-72			
2N3933	40	30	2.5	0.2		0.01	15			60	200	2	8			0.55	750	1600	2	4	200	TO-72		
2N5179	20	12	2.5	0.2	0.05	0.02	15			25	250	3	1	0.4	1	10	1	900	2000	5	4.5	200	TO-72	
BF115	50	30	5	0.145	0.03					48	167	1	10					230	1			TO-72		
BF167	40	30	4	0.15	0.03			0.05	10	30		4	10									TO-72-1		
BF173	40	25	4	0.2	0.03					15		20	2					550	5	3.5	36	TO-72		
BF180	30	20	3	0.15	0.02	0.1	20			13		2	10									TO-72		
BF181	30	20	3	0.15	0.02	0.1	20			6		12	7									TO-72		
BF182	25	20	3	0.15	0.02	0.4	15			10		2	10					650	2	3.3	0.33	TO-72-1		
BF184	30	20	5	0.145	0.03					67	220	1	10	0.7	0.74	1		200	1	2	0.9	TO-72-1		
BF185	30	20	5	0.145	0.03					36	125	1	10	0.7	0.74	1		200	260	1	2	0.9	TO-72-1	
BF200	30	20	3	0.15	0.02	0.1	40			15		3	10									TO-72		
CSC568	30	15	3	0.2	0.02	0.1	15			6		12	7									TO-72		
CSC2570	25	12	3	0.6	0.07	0.1	15			30	250	2	6					1	2	5	5	TO-72		
										40	200	20	10					0.9		5000	20	3	1000	TO-72-1