



IP67

FEATURES:

- AC Input 90~305 Vac Nominal
- Built-in Active Power Factor Correction
- Protection: SCP / OVP / OTP
- High Operating Ambient Temp.: -20°C~+60°C
- THD: <20% @ 277VAC Full Load
- Surge Protection: L-N 1 kV, L/N-FG 2 kV
- Safety: UL
- EMI: Meets CE / Meets FCC
- Comply with Indoor/Outdoor Waterproof (IP 67)
- Warranty: 3 years (refer to LinkCom warranty policy)
- 0-10V dimming
- RoHS Compliant

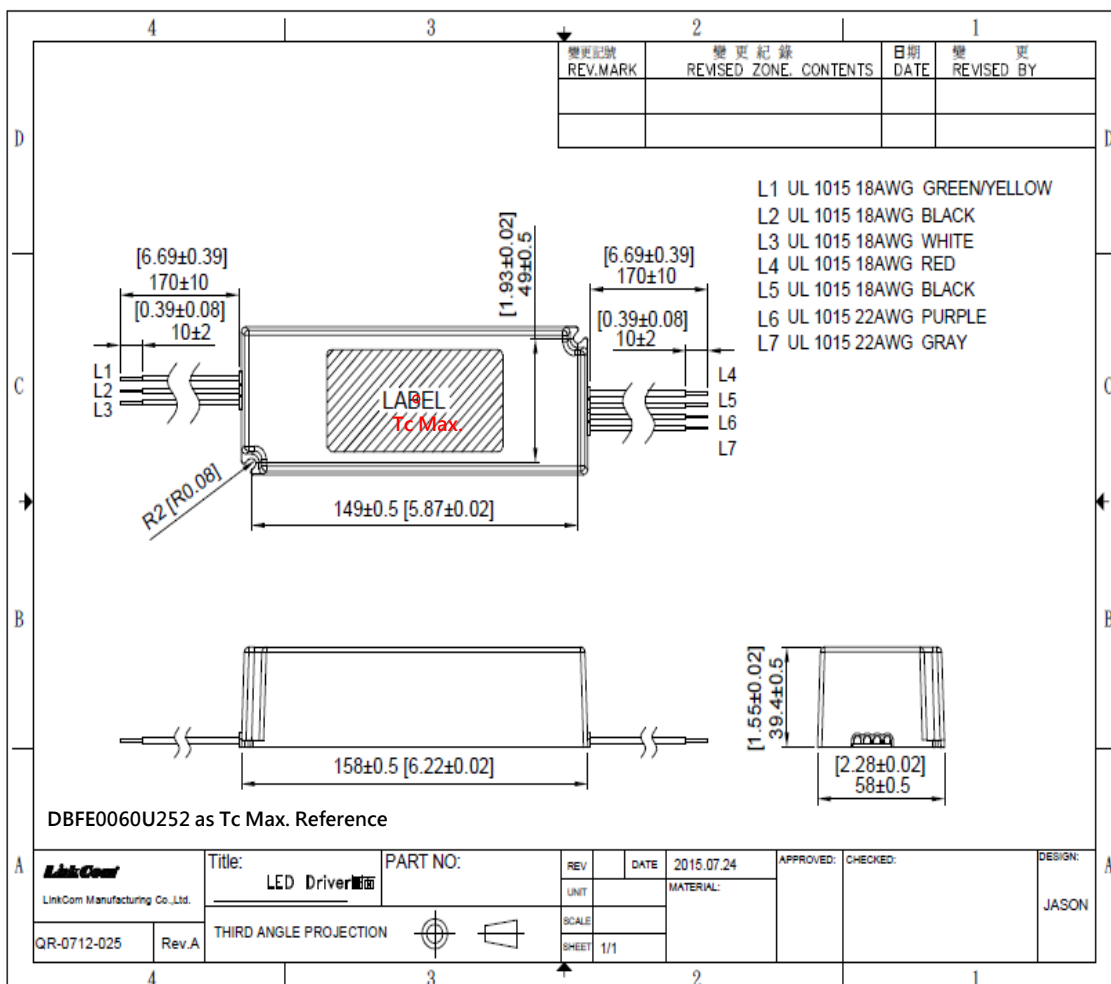
PRODUCT SPECIFICATION						
MODEL	DC OUTPUT POWER(W)	DC OUTPUT VOLTAGE(V)	OUTPUT CURRENT(A)	OUTPUT CURRENT TOLERANCE	EFFICIENCY	O/P NOISE (pk-pk,V)
DBFE0060U132	62.4	42-48V	1.3	±5%	86%	4.6V
DBFE0060U142	58.8	33-42V	1.4	±5%	86%	4.2V
DBFE0060U152	60.0	30-40V	1.5	±5%	86%	4V
DBFE0060U172	61.2	30-36V	1.7	±5%	86%	3.6V
DBFE0060U212	63.0	24-30V	2.1	±5%	86%	3.6V
DBFE0060U252	60.0	19-24V	2.5	±5%	86%	2.7V
DBFE0050U432	51.6	9-12V	4.3	±5%	82%	2V

ELECTRICAL SPECIFICATION	
INPUT VOLTAGE RANGE	90-305 Vac, 127-431 Vdc, Normal: 100-277 Vac
INPUT FREQUENCY	Range: 47-63Hz, Normal: 50-60Hz
ACTIVE POWER FACTOR	> 0.95 @ 110 Vac; > 0.9 @ 230 Vac
THD	< 20% at Full Load 100-277 Vac
TURN ON DELAY TIME	3000 ms at Full Load 115 Vac / 230 Vac
AC CURRENT	0.8 A / 110 Vac; 0.4 A / 230 Vac
INRUSH CURRENT (typ)	Cold Start 50 A @ 230 Vac
LEAKAGE CURRENT	< 0.75 mA at 277 Vac
SHORT CIRCUIT PROTECTION	automatically after the fault condition is removed
OVER VOLTAGE PROTECTION	
OVER TEMP. PROTECTION	
OPERATING TEMP.	-20°C ~ +60 °C @ Full Load 110-277 Vac
STORAGE TEMP.	-40 °C ~ +80 °C
RELATIVE HUMIDITY	10% to +90%, non-cond.
SAFETY	UL 8750
EMI	Meets FCC Part15 / Meets EN 55015
WITHSTAND VOLTAGE	I/P-O/P : 4242 Vdc, I/P-FG : 2500 Vdc, I/P-CASE : 2500 Vdc
ISOLATION RESISTANCE	I/P-O/P, I/P-FG, O/P-FG : >10M Ω / 500 Vdc / 25°C / 70% RH
DIMENSION (L*W*H)	158 * 58 * 39.4 mm 【6.22 * 2.28 * 1.55 inch】
(1) All parameters specified at 230 Vac input unless otherwise noted. (2) All specifications Typical at 25°C, unless otherwise noted, at normal line and load. (3) Ripple and Noise measured directly at pins/terminals at nom. load, pk-pk at 20MHz bandwidth. (4) Specified for free-air convection cooling. (5) Minimum load is NOT required for proper operation . (6) 100% Production Tested.	

* REFERENCE: www.linkcom.com.tw

* Please contact sales@linkcom.com.tw, sales@linkcomusa.com for more information

DIMENSIONS

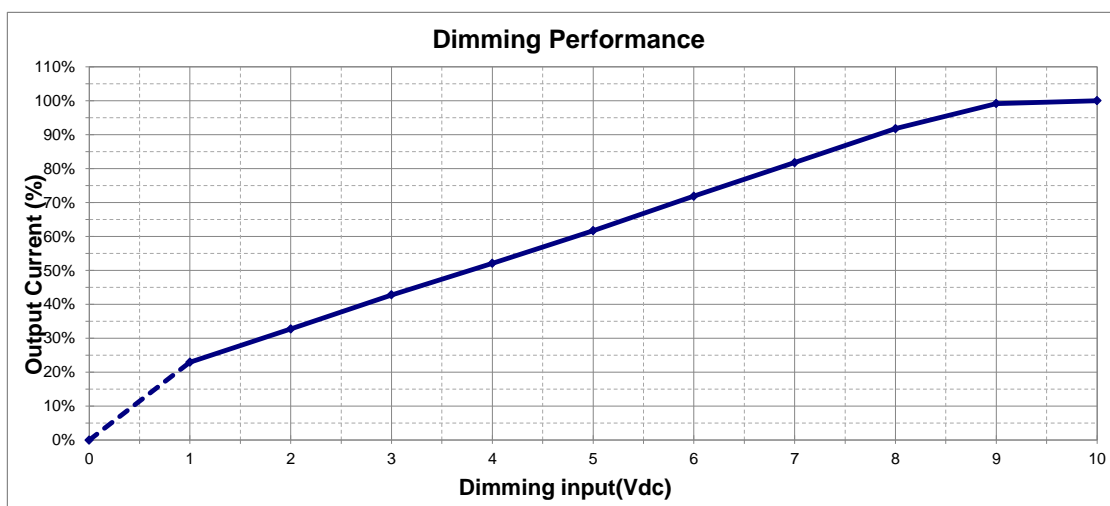
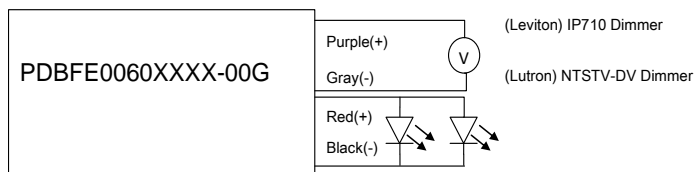


* REFERENCE: www.linkcom.com.tw

DIMMING OPERATION (Typical)

Parameters	Minimum	Typical	Maximum
Absolute maximum voltage on the 0-10(+) Purple Wire	1V	—	10V
Source current on the 0-10V(+) Purple Wire	0mA	—	1mA

0-10V Analog Dimming Typical Circuit

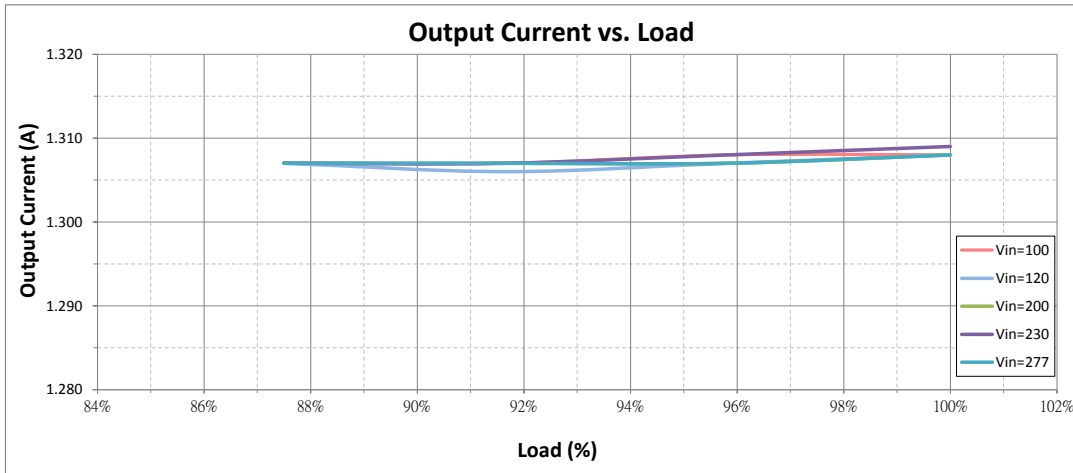


Notes:

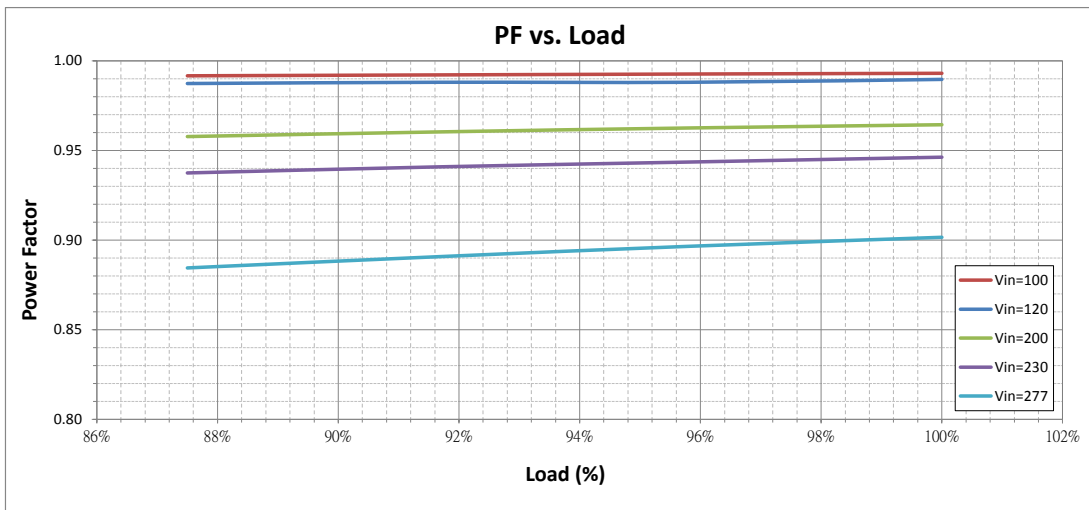
1. 0-10V Dimmable must be connect to extra two wires +Purple/-Gray on the output side.
2. Recommended dimmers are Leviton IP710,Lutron NTSTV-DV or equivalent.
3. If output side wires +Purple/-Gray are open, the output current I_o will be 100%.

60-DBFE Series

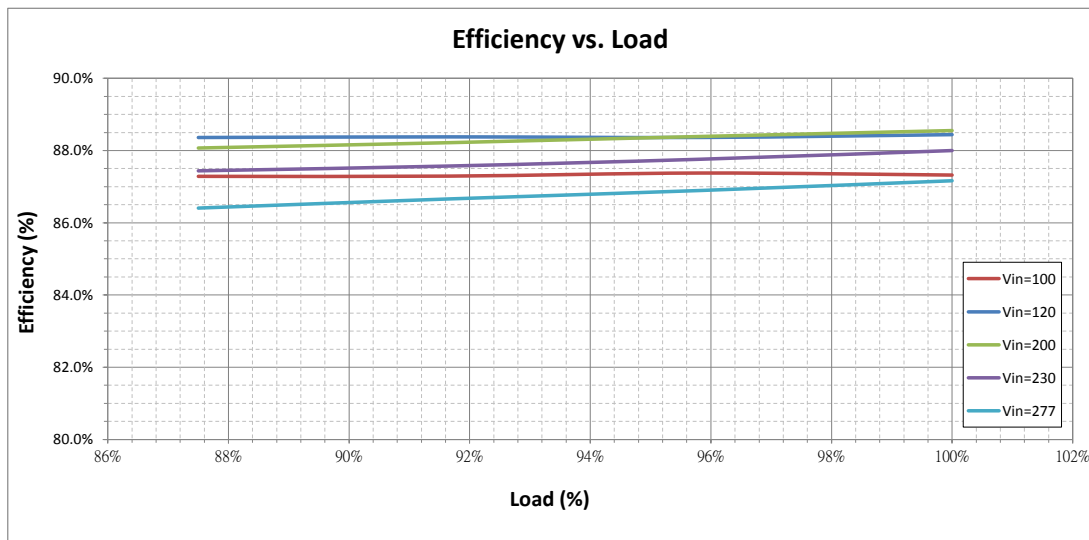
Output Current vs. Load (DBFE-060U132-00)



Power Factor vs. Load (DBFE-060U132-00)



Efficiency vs. Load (DBFE-060U132-00)



THD vs. Load (DBFE-060U132-00)

