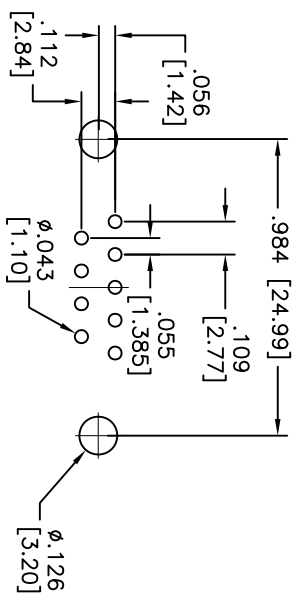
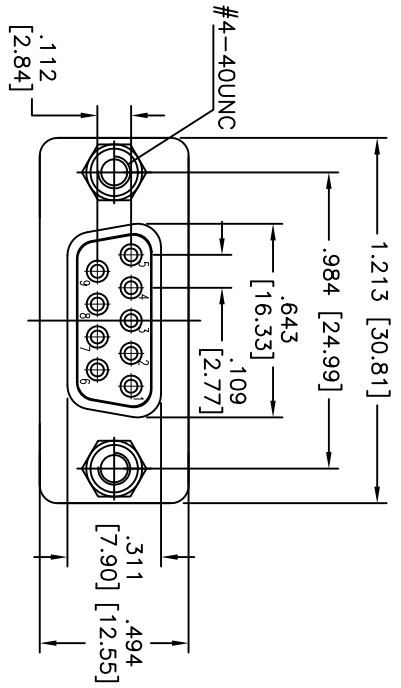
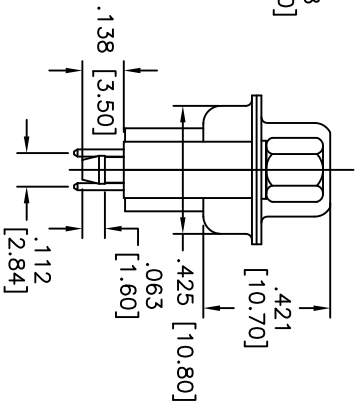
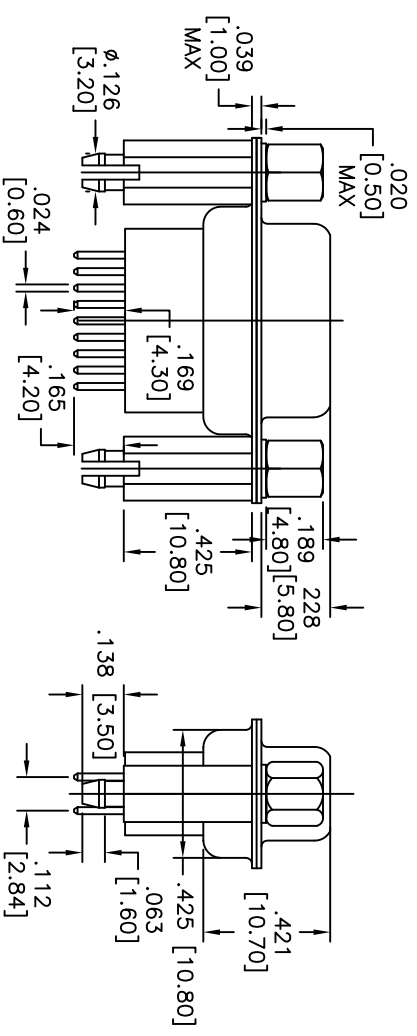


Rev	AWO #	Description	Date	Appr
-		RELEASED	12/13/10	

APPROVED: \_\_\_\_\_  
 DATE: \_\_\_\_\_ TITLE: \_\_\_\_\_



RECOMMENDED PCB LAYOUT



SPECIFICATIONS:

- Material: PA9T, glass reinforced, rated UL 94V-0
- Insulator color: Black
- Contacts: Copper Alloy
- Shell: Steel, Tin plated
- Hardware: Brass, Nickel plated
- Plating: Gold flash over Nickel underplate overall

- Electrical:
  - Operating voltage: 250 VAC max
  - Current rating: 3 Amps max
  - Contact resistance: 25 mohms max
  - Insulation resistance: 5,000 Mohms min
  - Dielectric withstanding voltage: 1,000 VAC for 1 minute
- Temperature Rating:
  - Operating temperature: -55°C to +85°C
- Environmental:
  - Lead free, RoHS compliant



Recommended soldering temp: 235°C for 5 seconds

# ADAM TECH

909 Railway Avenue, Union, NJ 07083  
 Phone: 908-687-5000 Fax: 908-687-5710

TITLE: D-SUB SOCKET, HIGH PROFILE, RIVETED

#4-40 JACKSCREWS & STANDOFFS W/BOARDLOCKS

UNLESS OTHERWISE SPECIFIED ALL DIMENSIONS ARE IN INCHES [MM]	
TOLERANCES: EXCEPT AS NOTED	
INCHES	HOLDS
.X ± .10	ØX ± .10
.XX ± .020	ØXX ± .015
.XXX ± .015	ØXXX ± .010
APPROVALS	DATE
DRAWN AY	12/13/10
CHECKED AW	12/13/10
APPROVED	

REF: S0027T	SCALE: NTS	SHEET 1 OF 1
-------------	------------	--------------