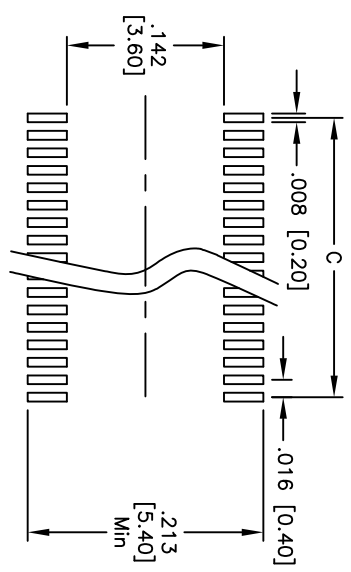
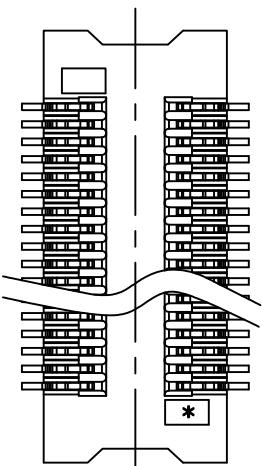
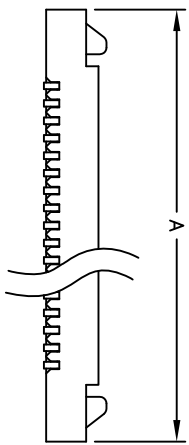
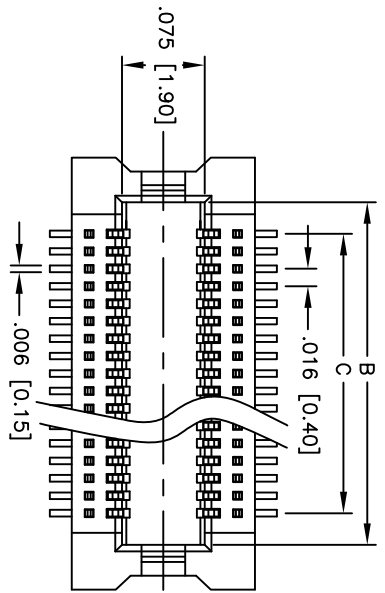
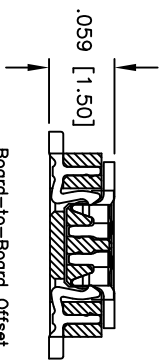
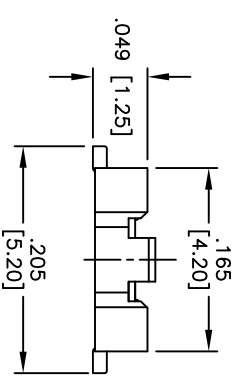


Rev	AWO #	Description	Date	Appr
-		RELEASED	11/30/10	

APPROVED: _____
 DATE: _____ TITLE: _____



RECOMMENDED PCB LAYOUT



Board-to-Board Offset
 Application Example

PACKAGED ON TAPE & REEL

Positions: 10 Thru 100
 A = .016 [0.40] x No. of Positions/2 + .122 [3.10]
 B = .016 [0.40] x No. of Positions/2 + .037 [0.95]
 C = .016 [0.40] x No. of Positions/2 - .016 [0.40]

ADAM TECH

909 Railway Avenue, Union, NJ 07083
 Phone: 908-687-5000 Fax: 908-687-5710

.016 [0.40] BOARD TO BOARD SOCKET
 SURFACE MOUNT

SPECIFICATIONS:

Material: Hi-Temp thermoplastic, rated UL 94V-0
 Insulator color: Natural
 Contacts: Phosphor Bronze
 Plating:
 Gold over Nickel underplate overall

Electrical:

Current rating: 0.5 Amps.
 Contact resistance: 60 mohms max @ AC 1mA
 Insulation resistance: 50 Mohms min @ DC 100V
 Dielectric withstanding voltage: 100 VAC for 1 minute

Temperature Rating:
 Operating temperature: -55°C to +85°C

Environmental:
 Lead free, RoHS compliant
 Recommended soldering temp: 260°C for 5 seconds



6

5

4

3

2

1

UNLESS OTHERWISE SPECIFIED ALL DIMENSIONS ARE MM	
TOLERANCES: EXCEPT AS NOTED	
INCHES	
.X	± .10
.XX	± .020
.XXX	± .015
.XXX	± .010
APPROVALS	DATE
DRAWN	DY
CHECKED	
APPROVED	

TITLE		PART NO.	
.016 [0.40] BOARD TO BOARD SOCKET		BB4-SO-XXX-G-1.25-NP-T/R	
SURFACE MOUNT		SCALE:	NTS
REV.		SHEET	1 OF 1

A

B

C

D