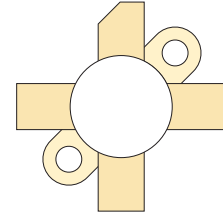



## RF POWER VERTICAL MOSFET

The VRF141 is a gold-metallized silicon n-channel RF power transistor designed for broadband commercial and military applications requiring high power and gain without compromising reliability, ruggedness, or inter-modulation distortion.



### FEATURES

- Improved Ruggedness  $V_{(BR)DSS} = 80\text{ V}$
- 150W with 22dB Typical Gain @ 30MHz, 28V
- 150W with 13dB Typical Gain @ 175MHz, 28V
- Excellent Stability & Low IMD
- Common Source Configuration
- 30:1 Load VSWR Capability at Specified Operating Conditions
- Nitride Passivated
- Refractory Gold Metallization
- High Voltage Replacement for MRF141
- RoHS Compliant 

### Maximum Ratings

All Ratings:  $T_c = 25^\circ\text{C}$  unless otherwise specified

Symbol	Parameter	VRF141	Unit
$V_{DSS}$	Drain-Source Voltage	80	V
$I_D$	Continuous Drain Current @ $T_c = 25^\circ\text{C}$	20	A
$V_{GS}$	Gate-Source Voltage	$\pm 40$	V
$P_D$	Total Device dissipation @ $T_c = 25^\circ\text{C}$	300	W
$T_{STG}$	Storage Temperature Range	-65 to 150	°C
$T_J$	Operating Junction Temperature	200	

### Static Electrical Characteristics


Symbol	Parameter	Min	Typ	Max	Unit
$V_{(BR)DSS}$	Drain-Source Breakdown Voltage ( $V_{GS} = 0\text{V}$ , $I_D = 100\text{mA}$ )	80			V
$V_{DS(ON)}$	On State Drain Voltage ( $I_{D(ON)} = 10\text{A}$ , $V_{GS} = 10\text{V}$ )		0.9	1.0	
$I_{DSS}$	Zero Gate Voltage Drain Current ( $V_{DS} = 60\text{V}$ , $V_{GS} = 0\text{V}$ )			1.0	mA
$I_{GSS}$	Gate-Source Leakage Current ( $V_{DS} = \pm 20\text{V}$ , $V_{GS} = 0\text{V}$ )			1.0	$\mu\text{A}$
$g_{fs}$	Forward Transconductance ( $V_{DS} = 10\text{V}$ , $I_D = 5\text{A}$ )	5.0			mhos
$V_{GS(TH)}$	Gate Threshold Voltage ( $V_{DS} = 10\text{V}$ , $I_D = 100\text{mA}$ )	2.9	3.6	4.4	V

### Thermal Characteristics

Symbol	Characteristic	Min	Typ	Max	Unit
$R_{\theta JC}$	Junction to Case Thermal Resistance			0.60	°C/W

### Dynamic Characteristics

Symbol	Parameter	Test Conditions	Min	Typ	Max	Unit
$C_{ISS}$	Input Capacitance	$V_{GS} = 0\text{V}$		400		pF
$C_{OSS}$	Output Capacitance	$V_{DS} = 28\text{V}$		375		
$C_{RSS}$	Reverse Transfer Capacitance	$f = 1\text{MHz}$		50		

 **CAUTION:** These Devices are Sensitive to Electrostatic Discharge. Proper Handling Procedures Should Be Followed.

Functional Characteristics

Symbol	Parameter	Min	Typ	Max	Unit
$G_{PS}$	$f_1 = 30\text{MHz}, f_2 = 30.001\text{MHz}, V_{DD} = 28\text{V}, I_{DQ} = 250\text{mA}, P_{out} = 150\text{W}_{PEP}$	16	20		dB
$G_{PS}$	$f_1 = 175\text{MHz}, V_{DD} = 28\text{V}, I_{DQ} = 250\text{mA}, P_{out} = 150\text{W}$		10		
$\eta$	$f_1 = 30\text{MHz}, f_2 = 30.001\text{MHz}, V_{DD} = 28\text{V}, I_{DQ} = 250\text{mA}, P_{out} = 150\text{W}_{PEP}$	40	45		%
$IMD_{(d3)}$	$f_1 = 30\text{MHz}, f_2 = 30.001\text{MHz}, V_{DD} = 28\text{V}, I_{DQ} = 250\text{mA}, P_{out} = 150\text{W}_{PEP}$ <sup>1</sup>		-30	-28	dB
$IMD_{(d11)}$	$f_1 = 30\text{MHz}, f_2 = 30.001\text{MHz}, V_{DD} = 28\text{V}, I_{DQ} = 250\text{mA}, P_{out} = 150\text{W}_{PEP}$		-60		
$\psi$	$f_1 = 30\text{MHz}, f_2 = 30.001\text{MHz}, V_{DD} = 28\text{V}, I_{DQ} = 250\text{mA}, P_{out} = 150\text{W}_{PEP}$ 30:1 VSWR - All Phase Angles	No Degradation in Output Power			

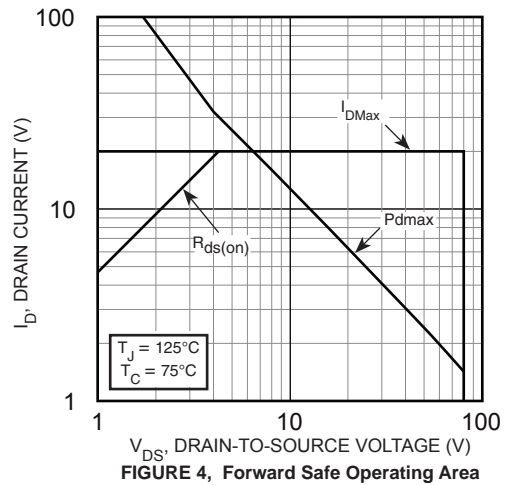
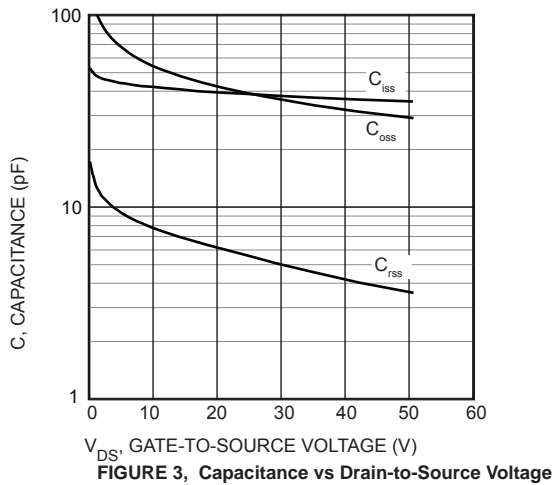
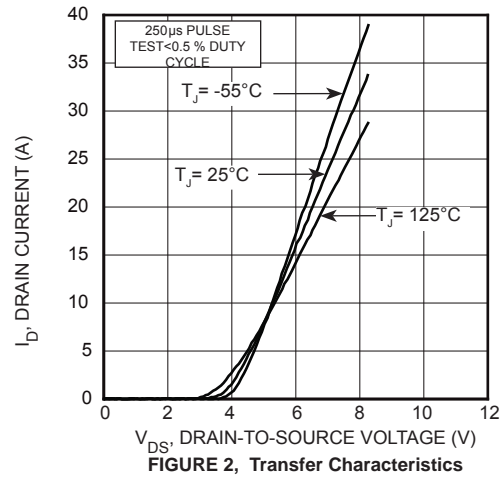
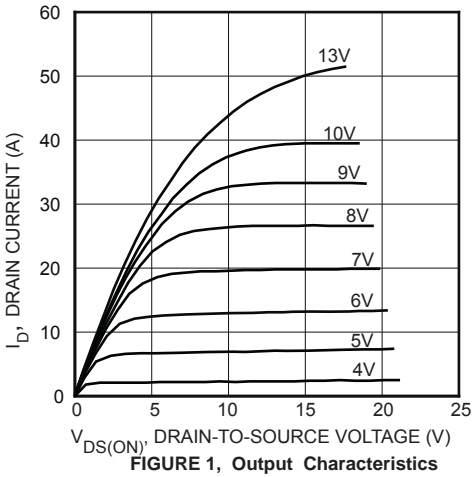
Class A Characteristics

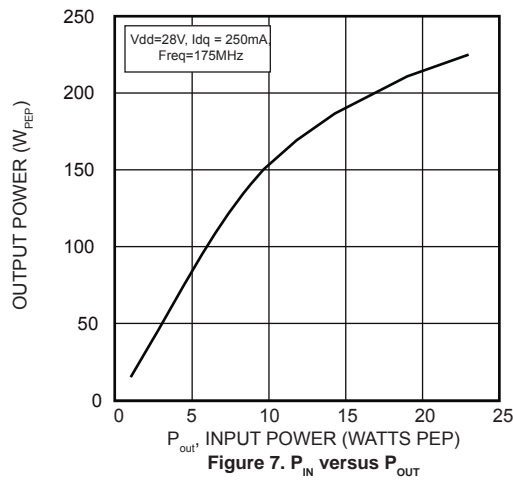
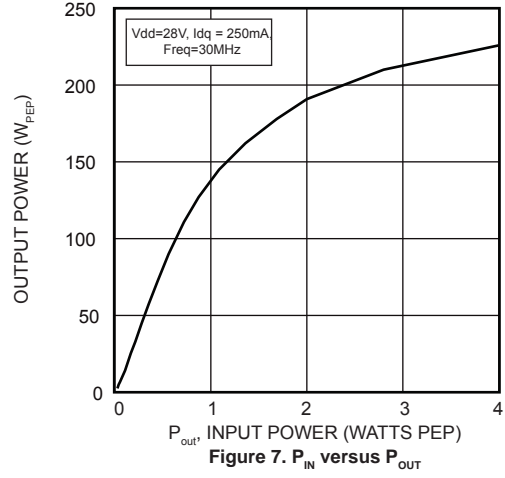
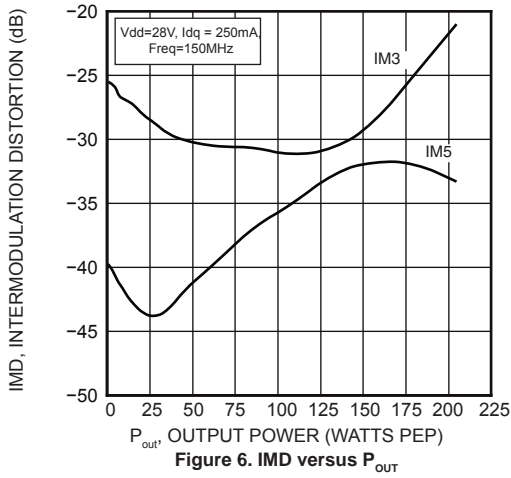
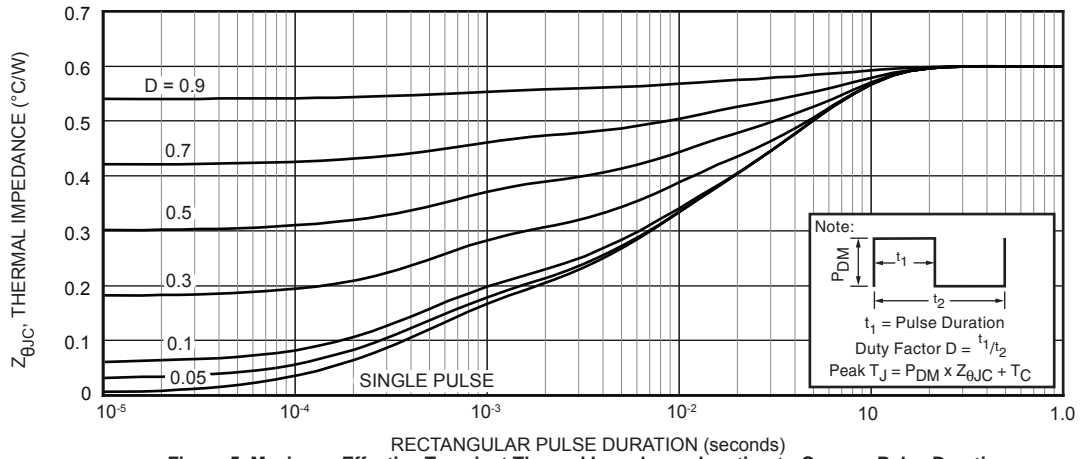
Symbol	Test Conditions	Min	Typ	Max	Unit
$G_{PS}$	$f_1 = 30\text{MHz}, f_2 = 30.001\text{MHz}, V_{DD} = 28\text{V}, I_{DQ} = 4.0\text{A}, P_{out} = 50\text{W}_{PEP}$		23		dB
$IMD_{(d3)}$	$f_1 = 30\text{MHz}, f_2 = 30.001\text{MHz}, V_{DD} = 28\text{V}, I_{DQ} = 4.0\text{A}, P_{out} = 50\text{W}_{PEP}$		-50		
$IMD_{(d9-d13)}$	$f_1 = 30\text{MHz}, f_2 = 30.001\text{MHz}, V_{DD} = 28\text{V}, I_{DQ} = 4.0\text{A}, P_{out} = 50\text{W}_{PEP}$		-75		

1. To MIL-STD-1311 Version A, test method 2204B, Two Tone, Reference Each Tone

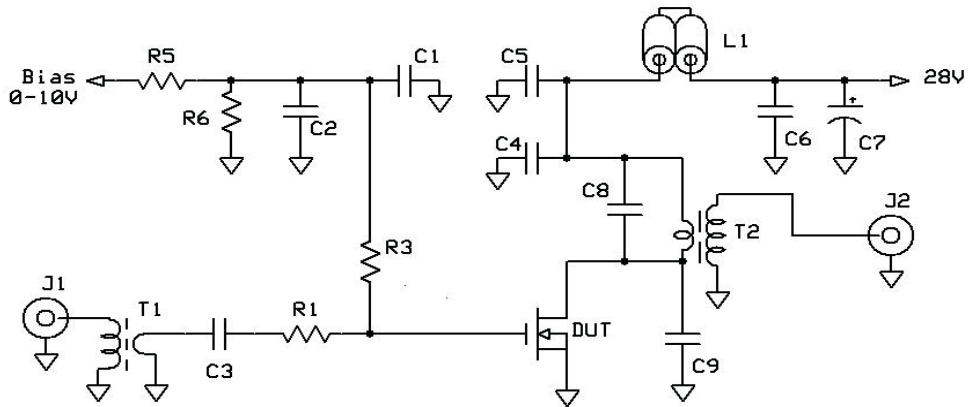
Microsemi reserves the right to change, without notice, the specifications and information contained herein.

Typical Performance Curves



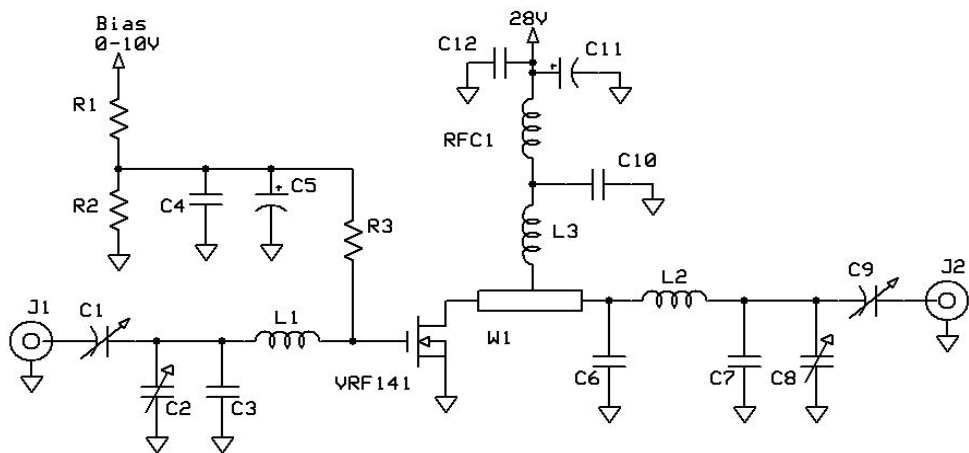


30 MHz test Circuit



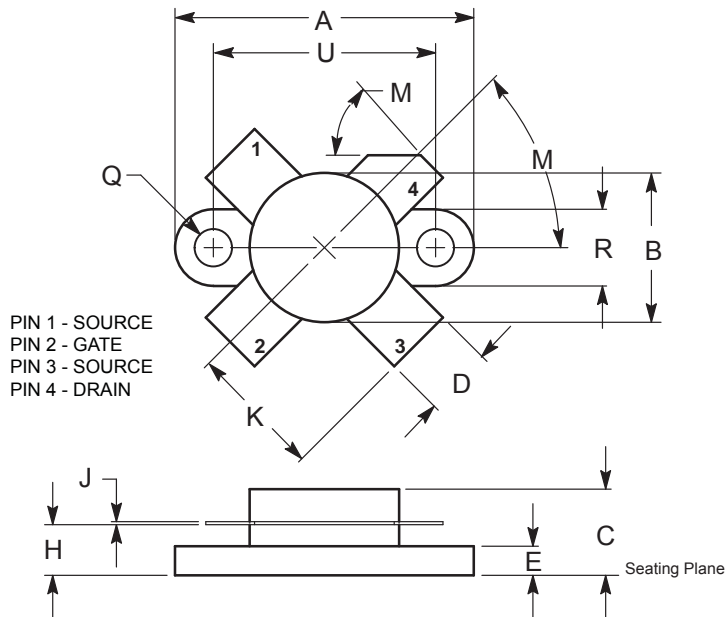
- |   |                               |
|---|-------------------------------|
| C1 - 1uF 50V tantalum                           | C9 - 100 pF ATC 100B          |
| C2-C6 - 0.1uF 100V SMT                          | L1 - two ferrite beads on #18 |
| C7 - 15uF 100V Elect                            | R1 - 1 ohm 1 W SMT            |
| C8 - 820 pF ATC 100B                            | R3 - 200 ohm 1/2 Carbn        |
| T1 - 16:1 bead/tube transformer                 | R4 - 470 ohm 1W               |
| T2 = 1:25 broadband bead/tube transformer u=125 | R5 R6 - 2200 ohm 1/4W         |

175 MHz test Circuit



- |                             |  |
|-----------------------------|--|
| C1, 2, 8, 9 - ARCO 463      | L1 - 3/4" #18 ga into Hairpin              |
| C3 C7 - 25 pF ATC 100B      | W1 - printed line 0.23"W x 0.7" L          |
| C4 C10 C12 - 0.1uF 100V SMT | L2 - 2t #16 ga .25" dia x .25" ~ 35nH      |
| C5 - 1 uF 15WV tant         | L3 - 2 turns #16 ga 5/16" ID tight. ~ 50nH |
| C6 - 270 pF ATC 100B        | R1 R2 - 2.2k ohm 1/4W                      |
| C10 - .05 100V 1206 SMT     | R3 - 150 ohm 1/4W                          |
| C11 - 15uF 100V Elect       | RFC1 Fair-Rite 2961666631 (VK200-4B)       |

**M174 Package Outline .5" SOE**  
**All Dimensions to be ±.005"**



DIM	INCHES		MILLIMETERS	
	MIN	MAX	MIN	MAX
A	0.096	0.990	24.39	25.14
B	0.465	0.510	11.82	12.95
C	0.229	0.275	5.82	6.98
D	0.216	0.235	5.49	5.96
E	0.084	0.110	2.14	2.79
H	0.144	0.178	3.66	4.52
J	0.003	0.007	0.08	0.17
K	0.435		11.0	
M	45° NOM		45° NOM	
Q	0.115	0.130	2.93	3.30
R	0.246	0.255	6.25	6.47
U	0.720	0.730	18.29	18.54

Microsemi's products are covered by one or more of U.S. patents 4,895,810 5,045,903 5,089,434 5,182,234 5,019,522 5,262,336 6,503,786 5,256,583 4,748,103 5,283,202 5,231,474 5,434,095 5,528,058 6,939,743 and foreign patents. US and Foreign patents pending. All Rights Reserved.