

# VOLTAGE CONTROLLED OSCILLATOR

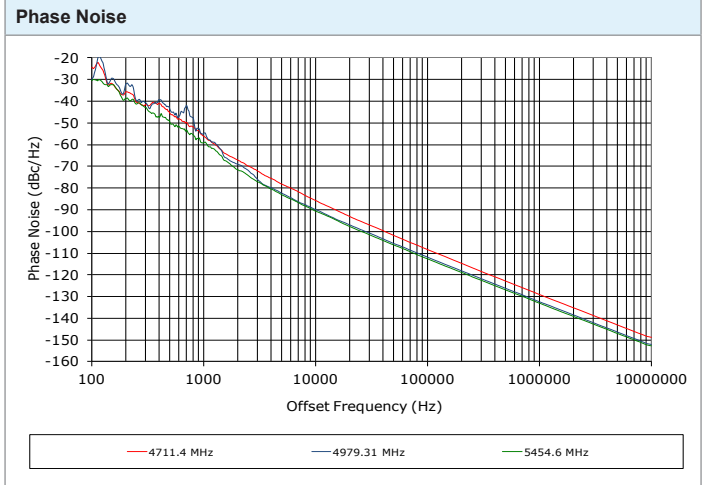
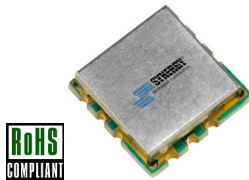
## SURFACE MOUNT MODEL: DCO473542-3

**OPTIMIZED BANDWIDTH**

**4650 - 5420 MHz**

**FEATURES:**

- ▶ Miniatures Size, Surface Mount (0.3"x0.3")
- ▶ Exceptional Phase Noise Performance
- ▶ Fast Tuning
- ▶ Planar Resonator Construction



**SPECIFICATIONS**

Frequency	4650 - 5420 MHz						
Tuning Voltage	See below.						
Bias Voltage	+3.0 VDC @ 22 mA (Max.)						
Output Power	-1 dBm (Min.)						
Tuning Sensitivity	28 - 55 MHz/V (Typ.)						
Output Impedance	50 Ohms (Nom.)						
Harmonic Suppression	24 dB (Typ.)						
Frequency Pulling	60 MHz (Typ. @ 1.75:1 VSWR)						
Frequency Pushing	6 MHz/V (Typ.)						
Tuning Port Capacitance	15 pF (Typ.)						
Typical Phase Noise	<table border="1"> <thead> <tr> <th>Offset</th> <th>dBc/Hz</th> </tr> </thead> <tbody> <tr> <td>10 kHz</td> <td>-88</td> </tr> <tr> <td>100 kHz</td> <td>-110</td> </tr> </tbody> </table>	Offset	dBc/Hz	10 kHz	-88	100 kHz	-110
	Offset	dBc/Hz					
	10 kHz	-88					
100 kHz	-110						
Operating Temperature Range	-40 to +85 °C						

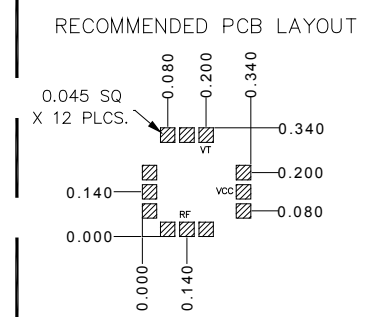
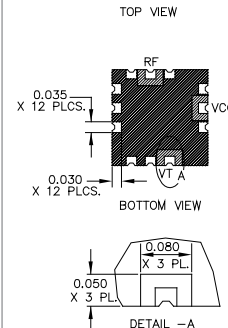
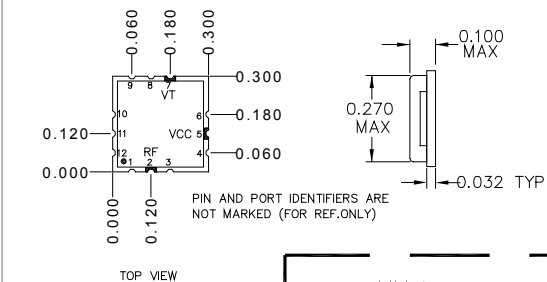
**Guaranteed Tuning Specifications**

Tuning Voltage ( V )	Frequency ( MHz )
0.3	4650 (Max.)
3	4690 (Min.)
5	4760 (Min.)
8	4825 (Min.)
12	5000 (Min.)
18	5230 (Min.)
22	5420 (Min.)

**Absolute Maximum Ratings**

Storage Temp. Range	-55 to +125 °C
Bias Voltage	+3.3 V
Tuning Voltage	+25 V
DC Voltage Applied to RF Out	± 25 V

Package # 343



PACKAGE MOUNTING: SEE APPLICATION NOTE AN7300 & AN7302

TOLERANCES ON THREE DECIMAL PLACES= ± 0.015

DIMENSIONS ARE IN INCHES. ALL UNLABELED PINS TO BE GROUND.

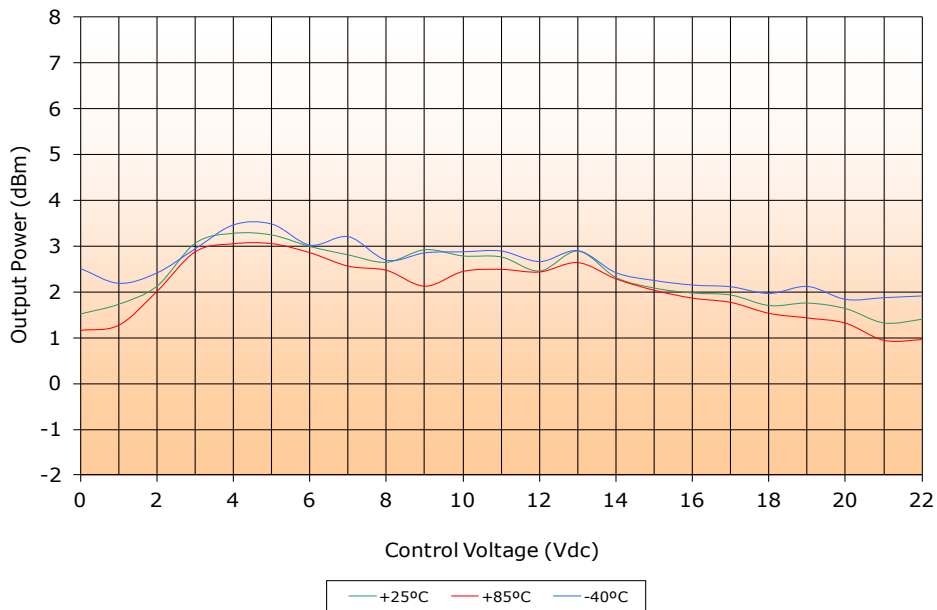
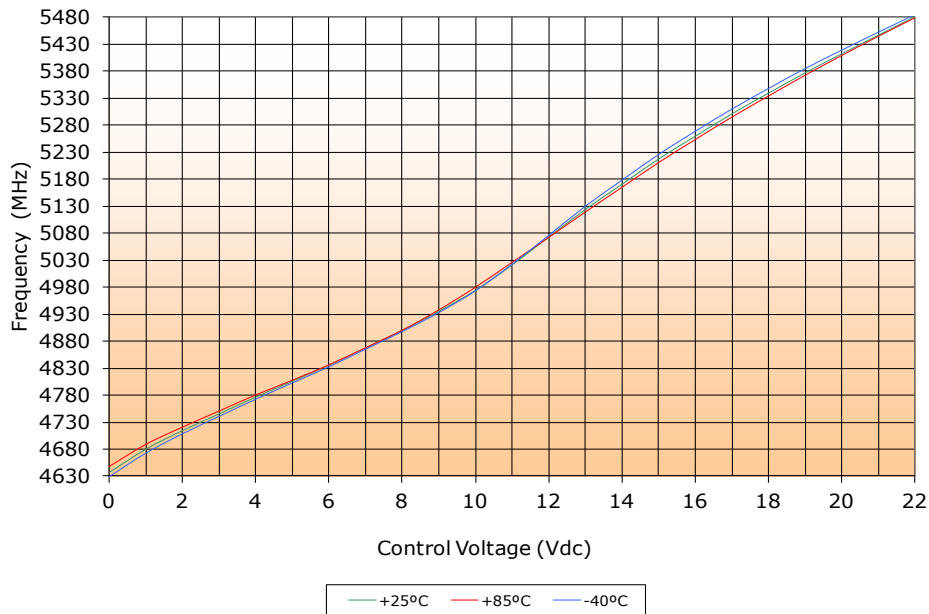
# VOLTAGE CONTROLLED OSCILLATOR

## SURFACE MOUNT MODEL: DCO473542-3

OPTIMIZED BANDWIDTH

4650 - 5420 MHz

PERFORMANCE PLOTS



# VOLTAGE CONTROLLED OSCILLATOR

## SURFACE MOUNT MODEL: DCO473542-3

OPTIMIZED BANDWIDTH

4650 - 5420 MHz

PERFORMANCE PLOTS

