

Driver Transformer



Model: D4025-101/201/301

characteristics:

Applicable for circuit of triggering pulse train

Technical indicators:

Installation method: PCB

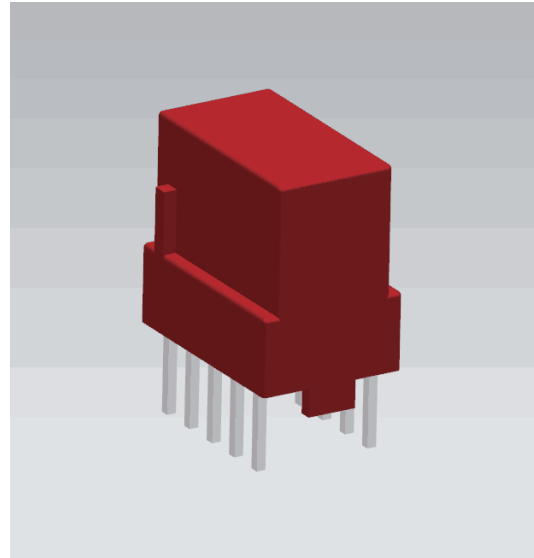
Flame resistance: UL94-V0

Operating temperature: $-40^{\circ}\text{C} \sim +85^{\circ}\text{C}$

Storage temperature: $-40^{\circ}\text{C} \sim +85^{\circ}\text{C}$

Frequency range: 100KHz~200KHz

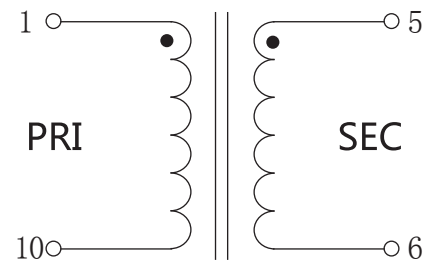
Dielectric strength: 3.1KV 50Hz 2s



Electrical parameters:

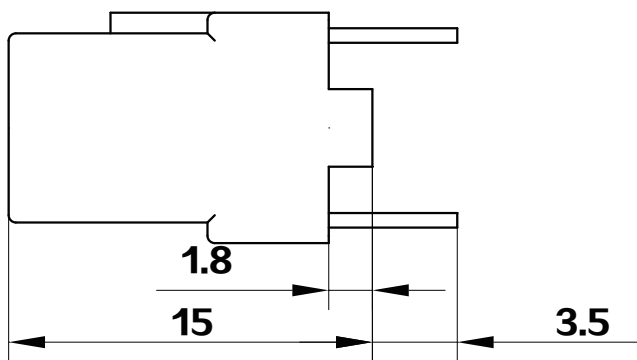
Vout microsecond integral	45	μVs
Pulse width (D=1:2)	3/2.3/1.5	μs
Ratio	1:1/2: 1/3: 1	
Input amplitude	15/20/30	V
Output amplitude	$\geq 13/\geq 8.8/\geq 8.8$	V
Load impedance	100	Ω
Leading edge time	≤ 0.1	μs
Main circuit operating voltage	380	V
Weight		g

Connection diagram:

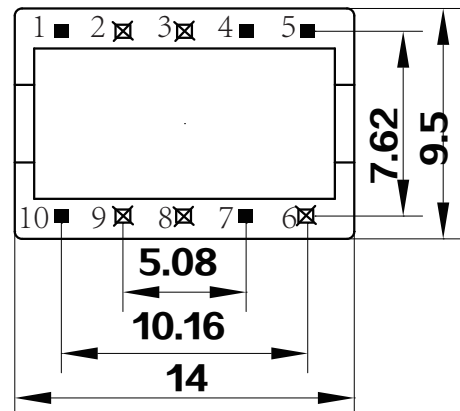


pin 4, 7 are null.

Dimensions (in mm) :



Front View



Bottom View